

WHY ECD IS IMPORTANT: FIVE NUMBERS TO REMEMBER

Mary Eming Young, MD, DrPH

Director, Center for Child Development, China Development Research Foundation

**16th International Meeting on Early and Preschool Education: Comprehensive
Early Childhood Development, Inclusion, and Attention to Diversity**

Monterrey, Mexico | October 12 – 15, 2016

*"There can be no keener
revelation of a society's soul than
the way in which it treats its
children."*

Nelson Mandela

Why does business care about early childhood?

“Because the first step in the process of producing globally competitive adults is to produce school ready five year olds. After about 15 years of effort, the Business Roundtables and Chambers of Commerce in every state now supports early childhood investment”

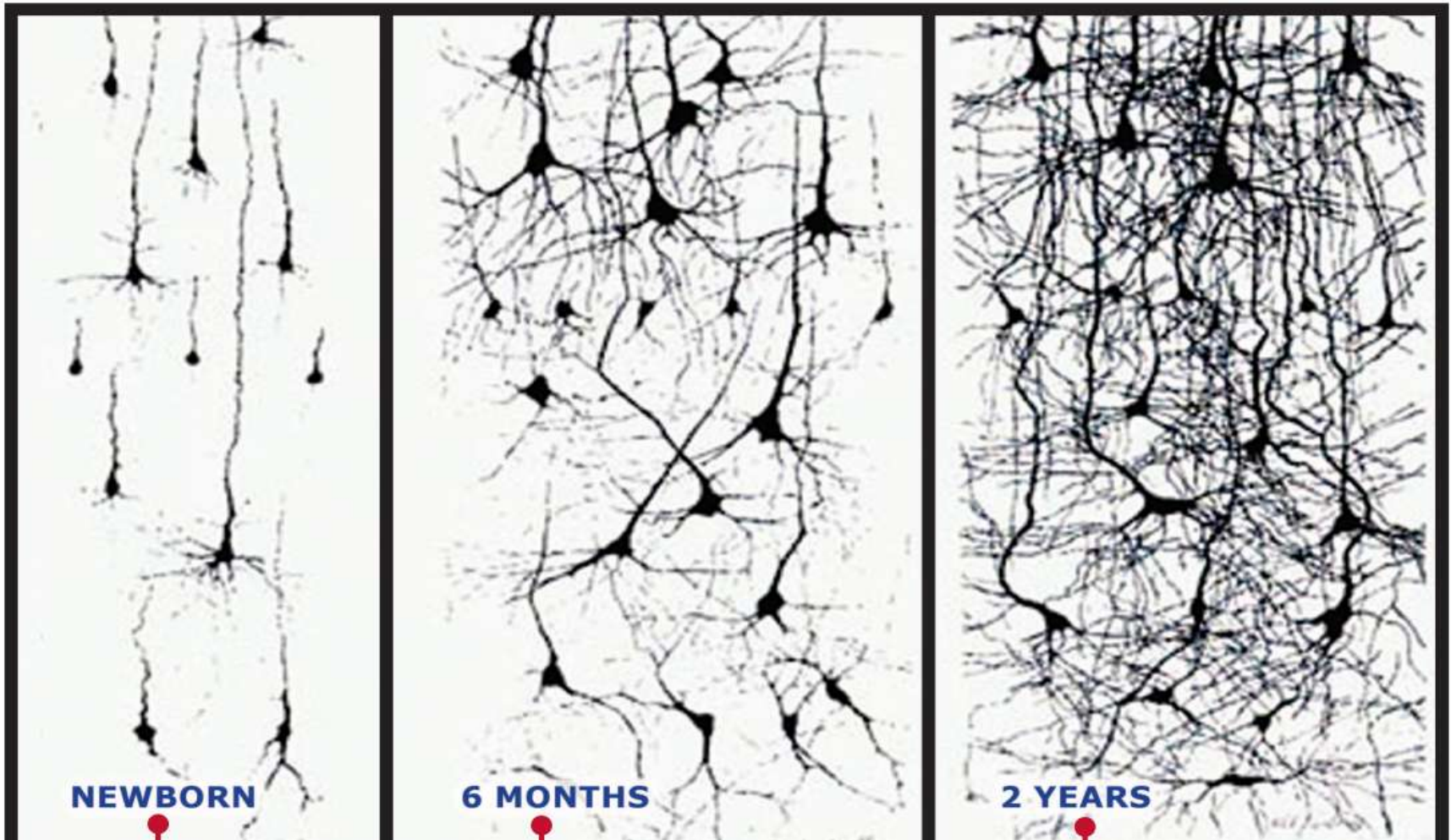
Rob Dugger, Ready Nation 2016

Reasons for investing in early child development

- Dry economic logic – high returns to investing in children
- More so, beyond pure economic reasons, it relates to social linkages- abilities to live with others, to participate in social activities and avoid social disasters (A. Sen), i.e development that improves people's lives by improving peoples' capabilities.

FIVE NUMBERS TO REMEMBER ABOUT EARLY CHILDHOOD DEVELOPMENT

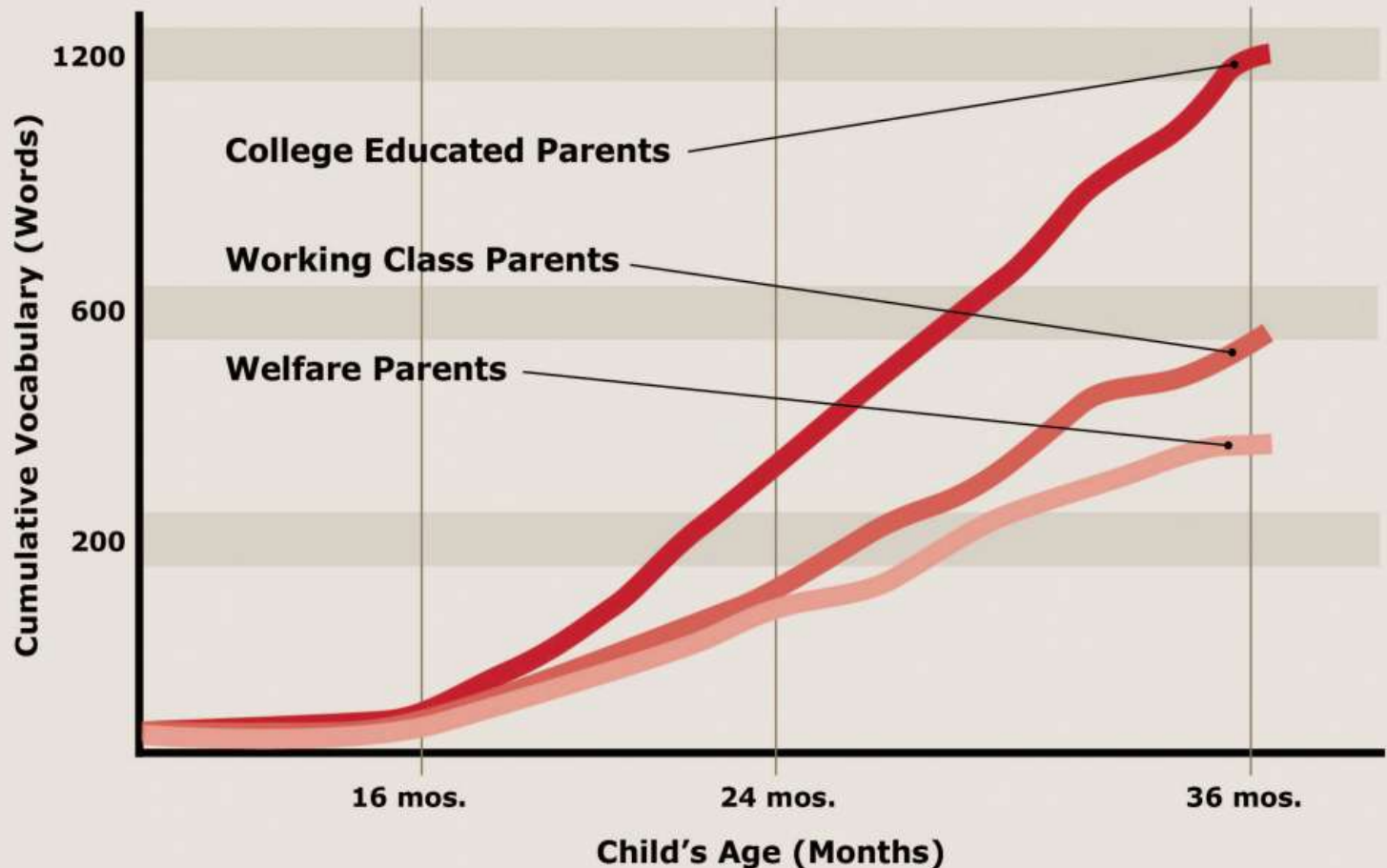
700 700 NEW NEURAL CONNECTIONS
PER SECOND



FIVE NUMBERS TO REMEMBER ABOUT EARLY CHILDHOOD DEVELOPMENT

18

18 MONTHS: AGE AT WHICH DISPARITIES IN VOCABULARY BEGIN TO APPEAR

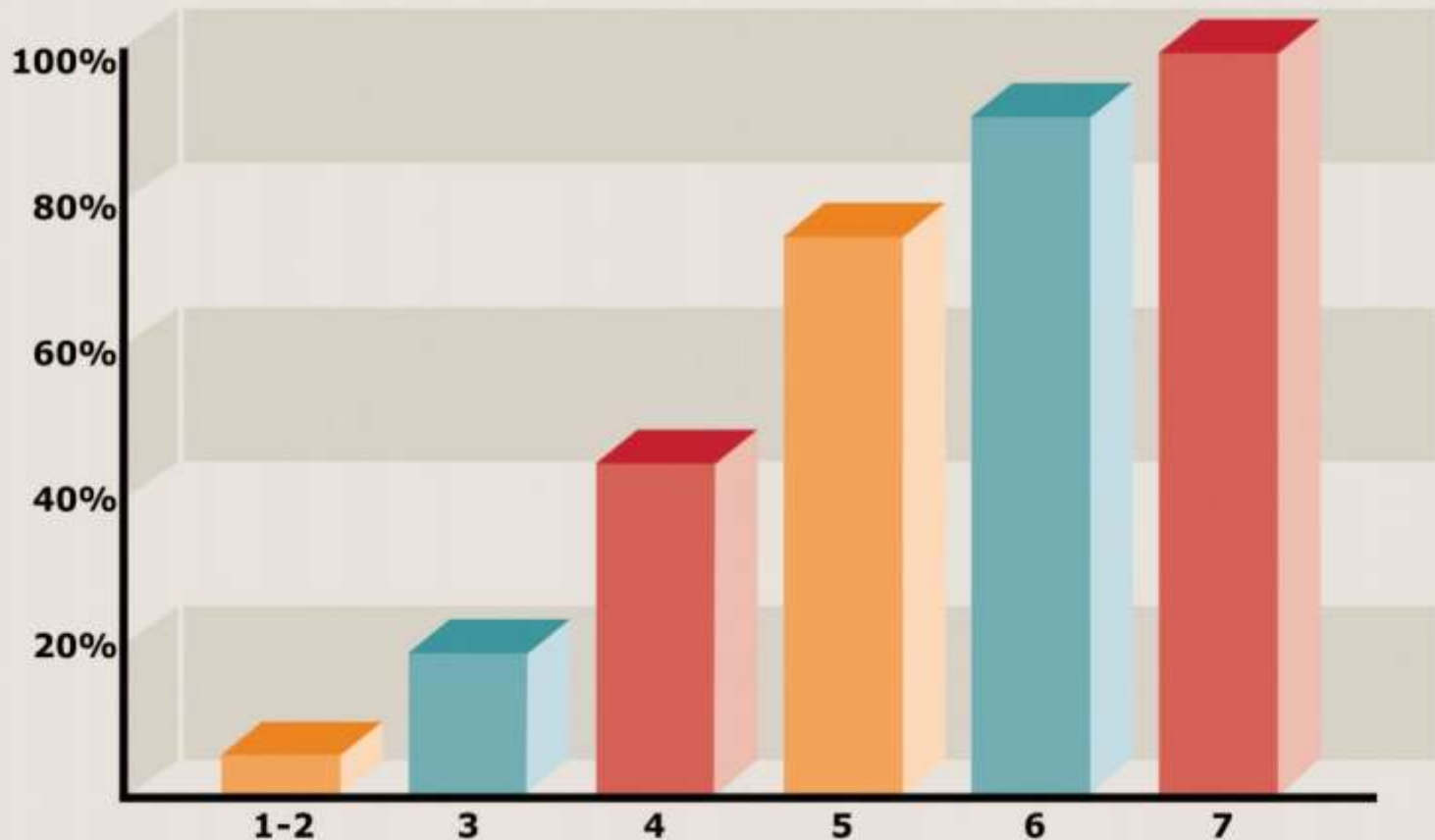


90-100

90-100% CHANCE OF
DEVELOPMENTAL DELAYS

WHEN CHILDREN EXPERIENCE 6-7 RISK FACTORS

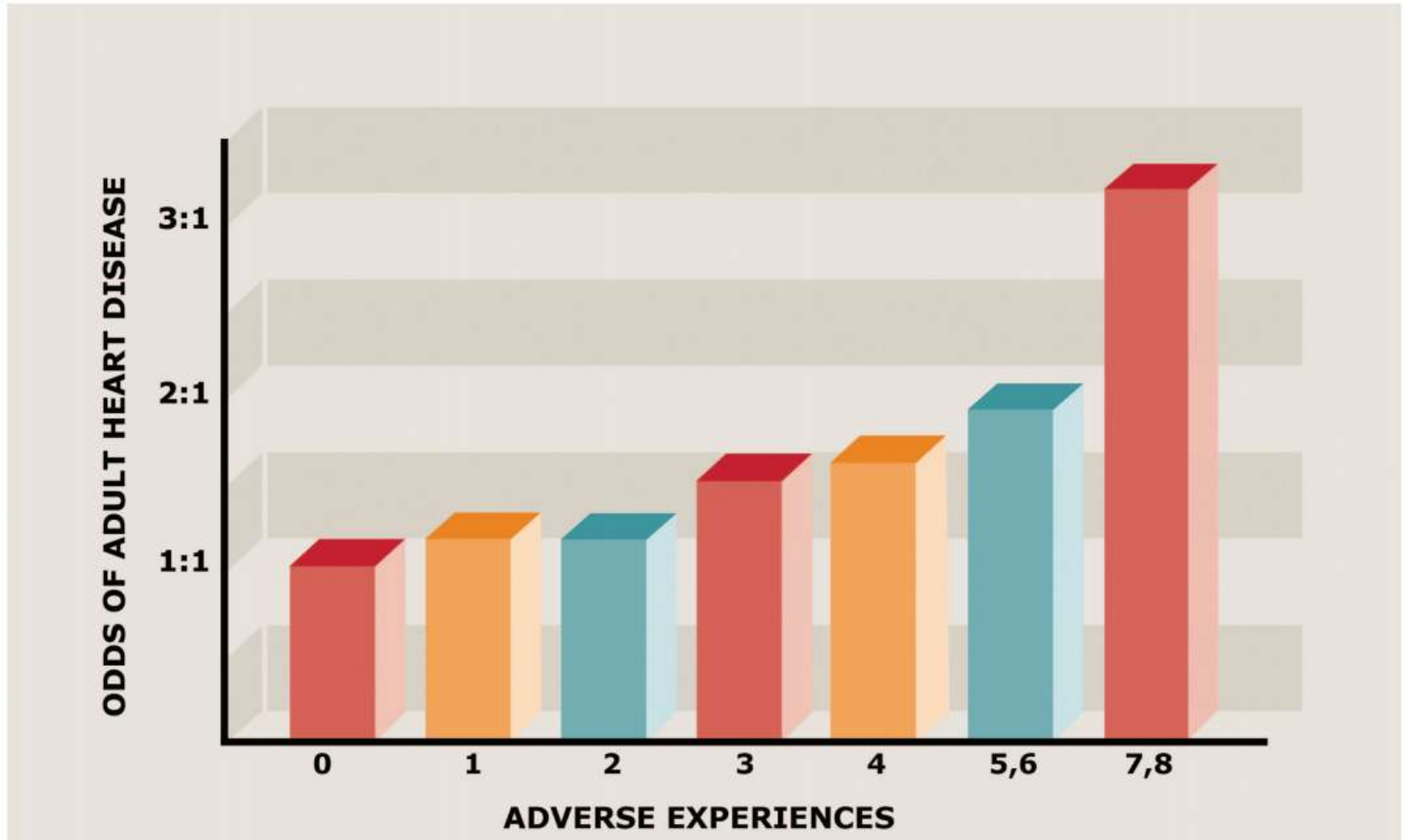
CHANCE OF DEVELOPMENTAL DELAY BY AGE 3



NUMBER OF RISK FACTORS

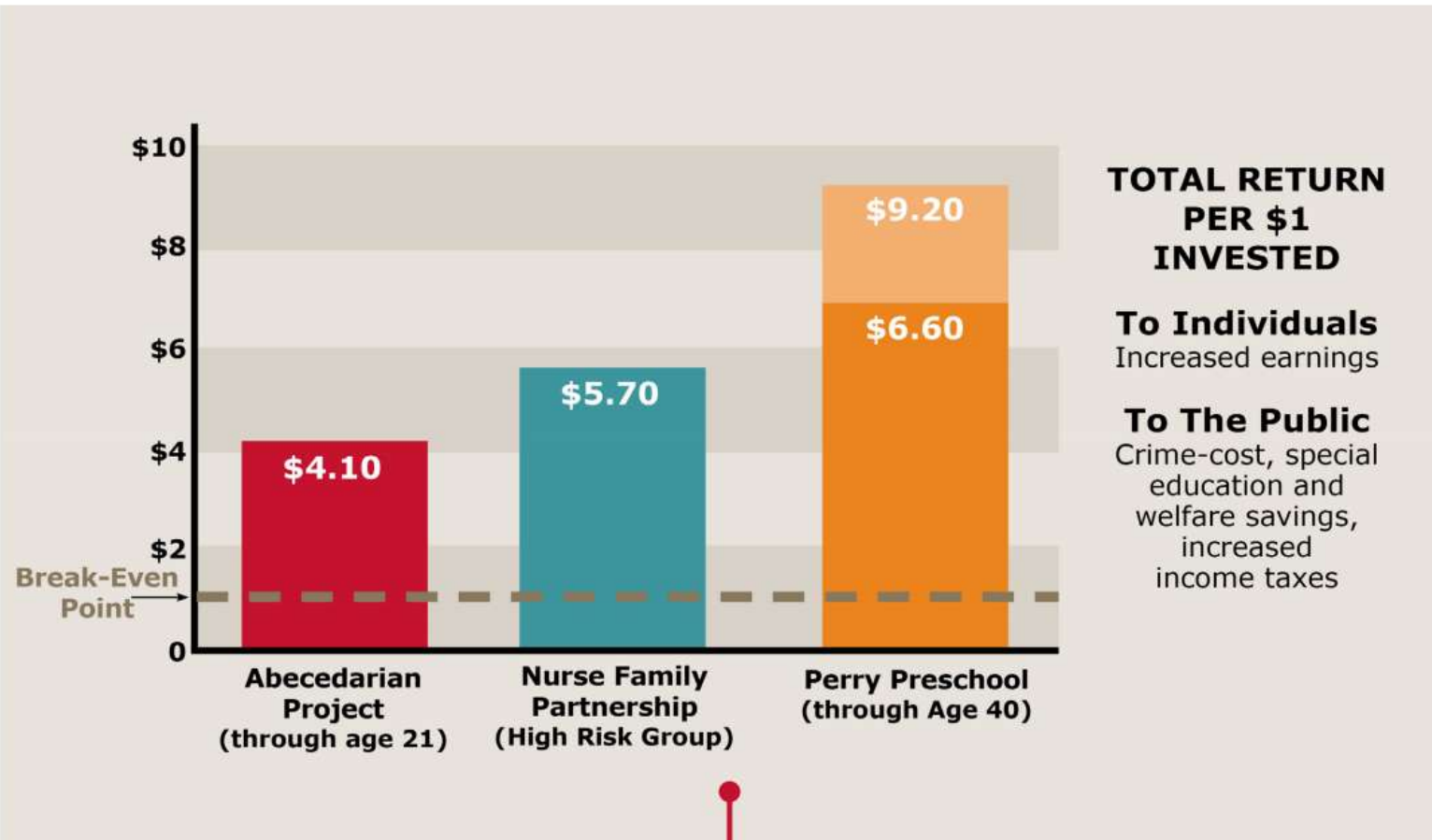
FIVE NUMBERS TO REMEMBER ABOUT EARLY CHILDHOOD DEVELOPMENT

3:1 3:1 ODDS OF ADULT HEART DISEASE
AFTER 7-8 ADVERSE CHILDHOOD EXPERIENCES



FIVE NUMBERS TO REMEMBER ABOUT EARLY CHILDHOOD DEVELOPMENT

4-9 \$4 - \$9 IN RETURNS FOR EVERY DOLLAR INVESTED IN EARLY CHILDHOOD PROGRAMS



2000
7 countries

2007
40 countries

2014
68 countries

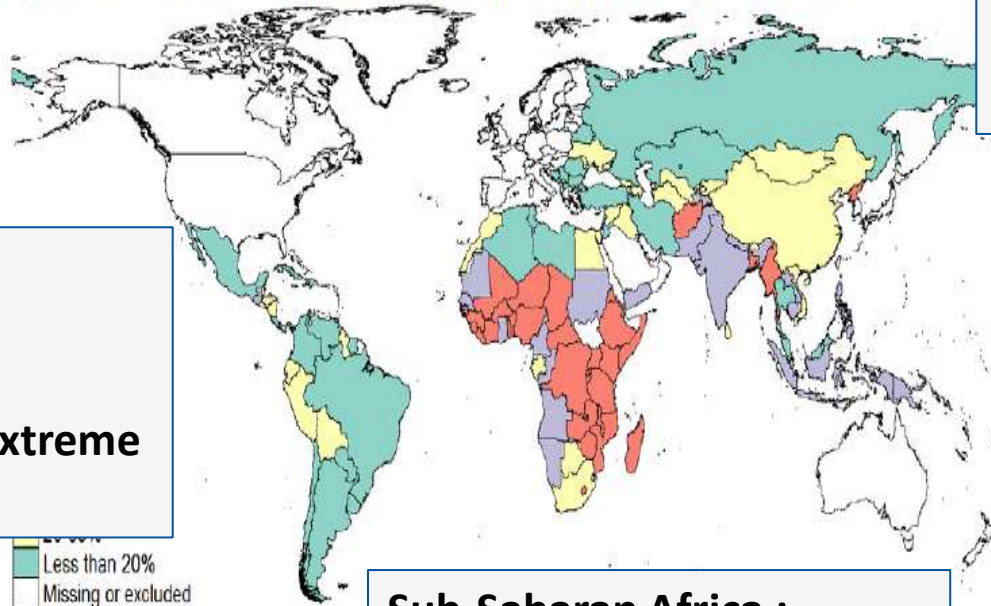
Countries with a
national multi-sectoral
early childhood
development policy
instrument in 2014



Source: Lancet 2016

Risk varies significantly by low, middle and upper-middle income countries

Figure 3b. Prevalence of under-five children at risk of poor development in 2010



Latin America and Caribbean:

- 15% stunted
- **18% at risk** of extreme poverty

Europe & Central Asia:

- 17% stunted
- **19% at risk** of extreme poverty

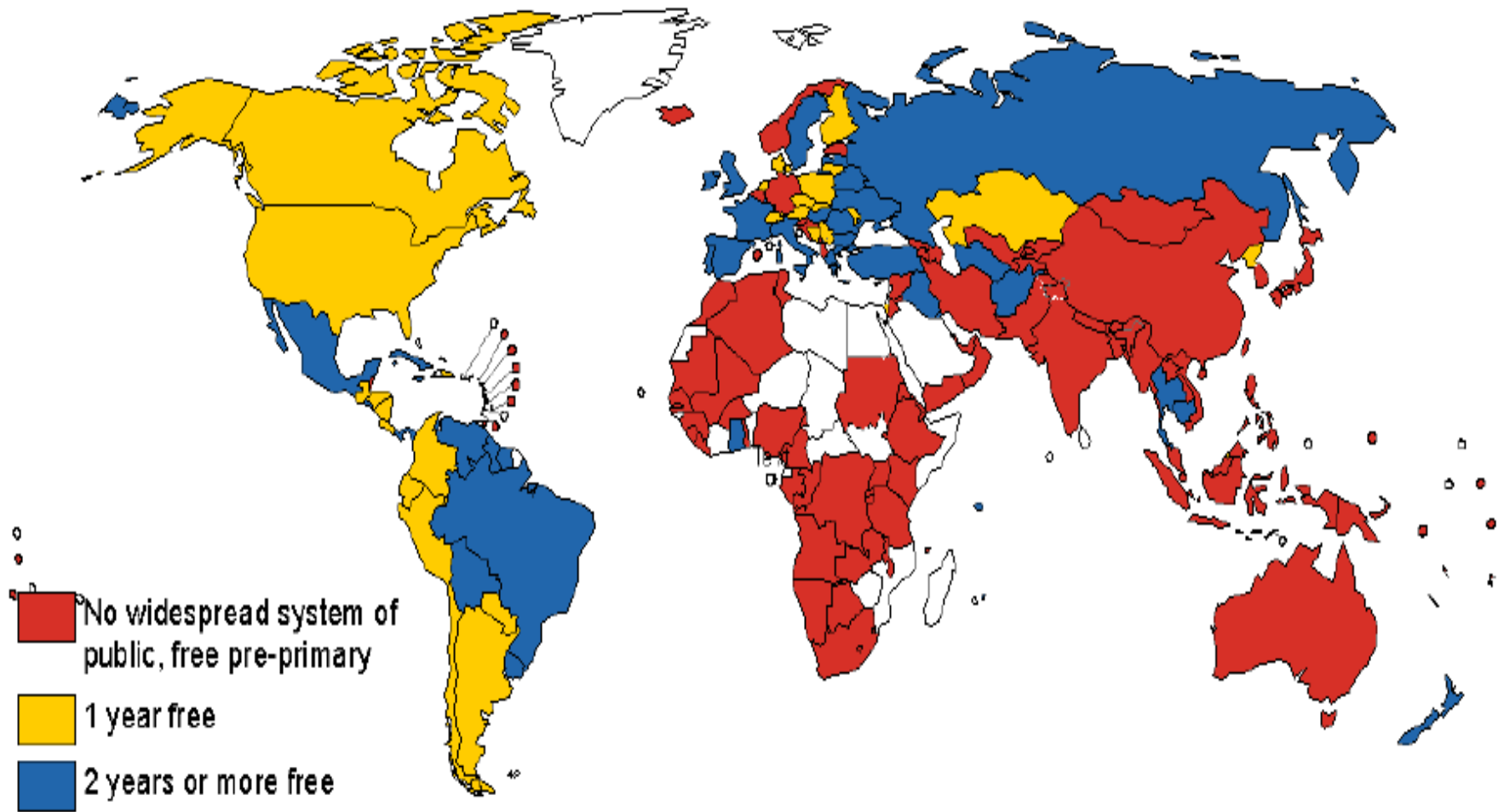
South Asia:

- 40% stunted
- **53% at risk** of extreme poverty

Sub-Saharan Africa :

- 39% stunted
- **66% at risk** of extreme poverty

Free pre-primary education



Source: Lancet 2016

Multi-sectoral intervention packages to improve child development

Family Support & Strengthening Package

Access to quality services, skills building, support

Multigenerational Nurturing Care Package

Care and protection of mothers' and fathers' physical and mental health and wellbeing, and their capacity to provide nurturing care

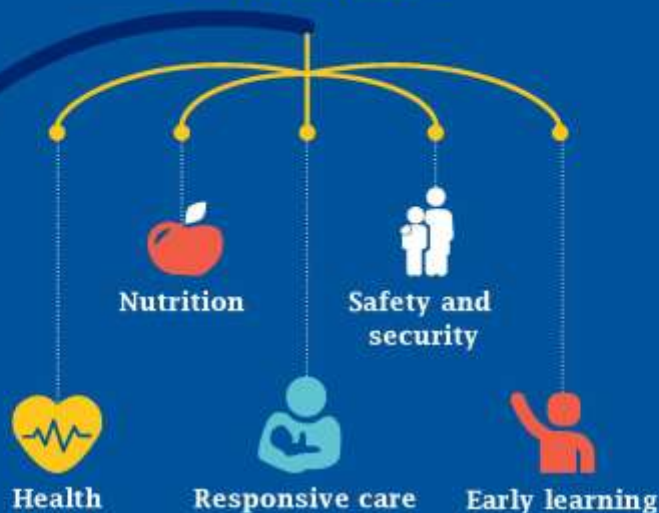
Early Learning & Protection Package

Integrates support for young children with parental and caregivers' support to create a nurturing learning environment

Every young child deserves to thrive

A child's brain develops fastest in the first 2-3 years

Nurturing Care:



The Foundation for Children's Development

Cost of Inaction

About 250 million children under 5 are at risk of not reaching their full potential

About 25% reduction in average adult earning potential

Countries may lose up to 2 or 3 fold what they now invest in health or education

Early childhood development pays off

Better health and learning capacity

Increased adult earning

Poverty reduction

Fewer inequalities

More peaceful societies

Nurturing care means supporting parents and caregivers to:

Breastfeed and provide nutritious food

Maintain good health during conception, pregnancy and in the postnatal period

Provide a nurturing and safe environment

Give their children opportunities to explore and learn

- Source of the above slides:
 - CDC, Harvard University
 - Lancet 2016